



# UPGRADING

## WHY, WHEN AND HOW

*Ian Humphries*

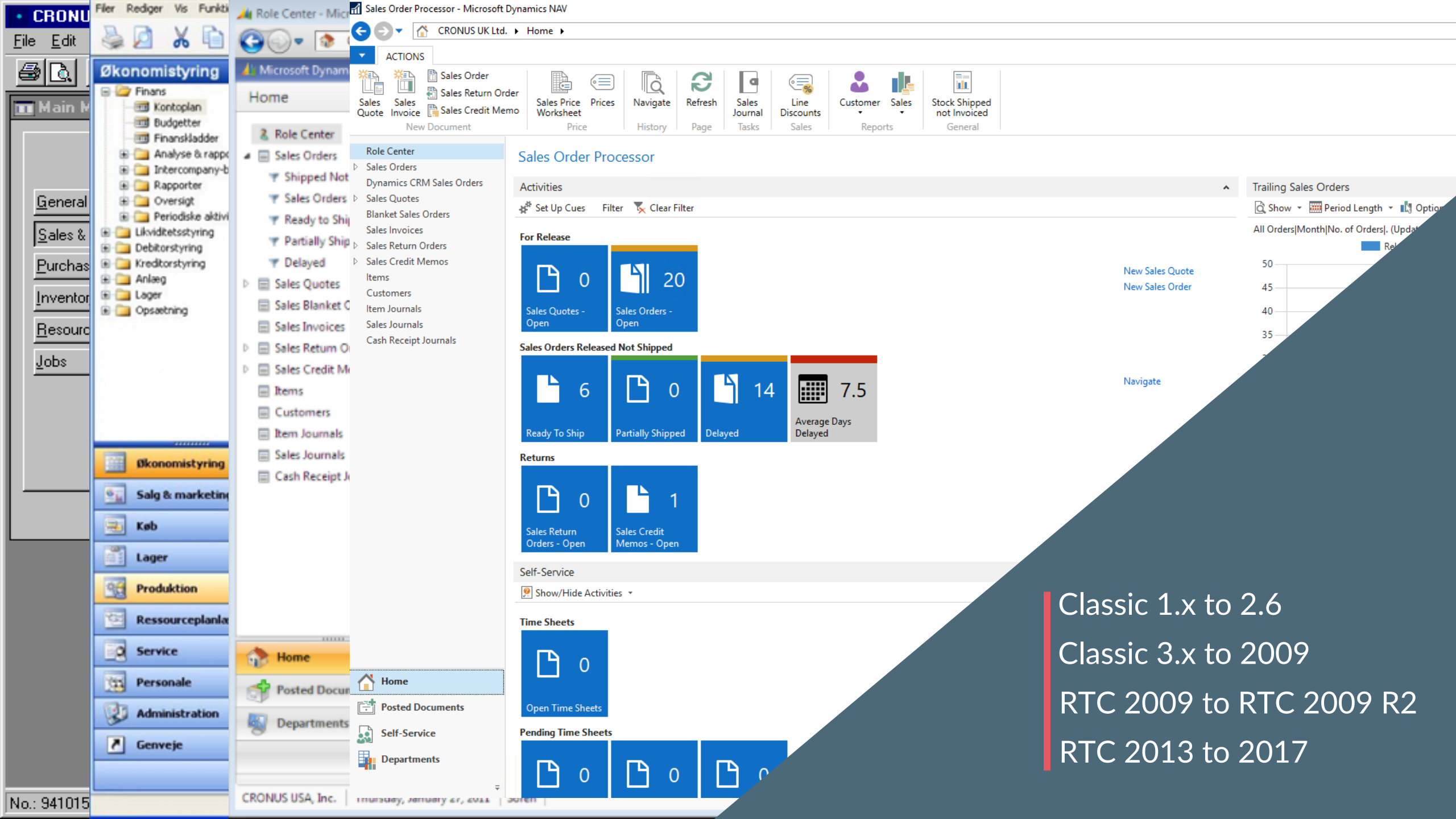


*We are*  
TheNAVPeople  
The365People

**“HOW DO I GET TO SUCH  
AND SUCH A PLACE?”**



**“OH I WOULDN'T START  
FROM HERE IF I WAS YOU”**



Classic 1.x to 2.6

Classic 3.x to 2009

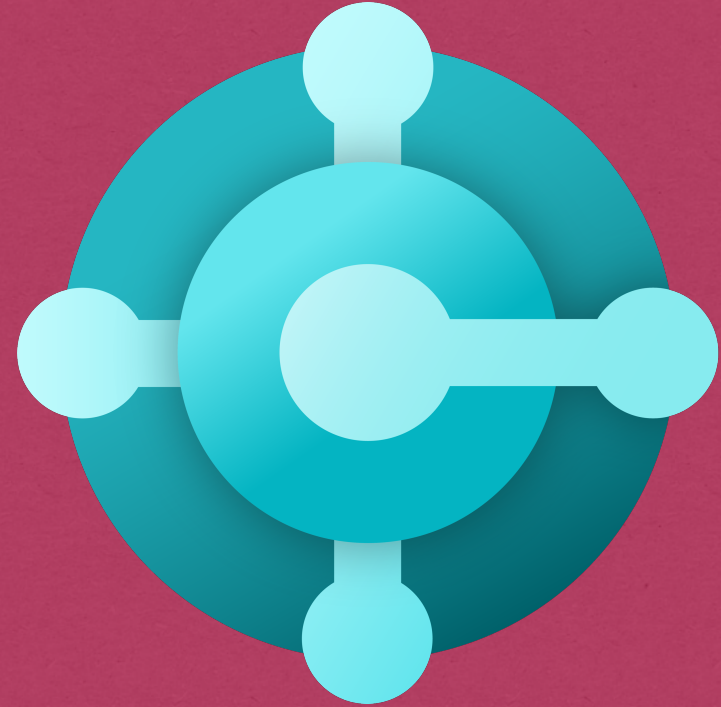
RTC 2009 to RTC 2009 R2

RTC 2013 to 2017





# GETTING TO 365 BUSINESS CENTRAL



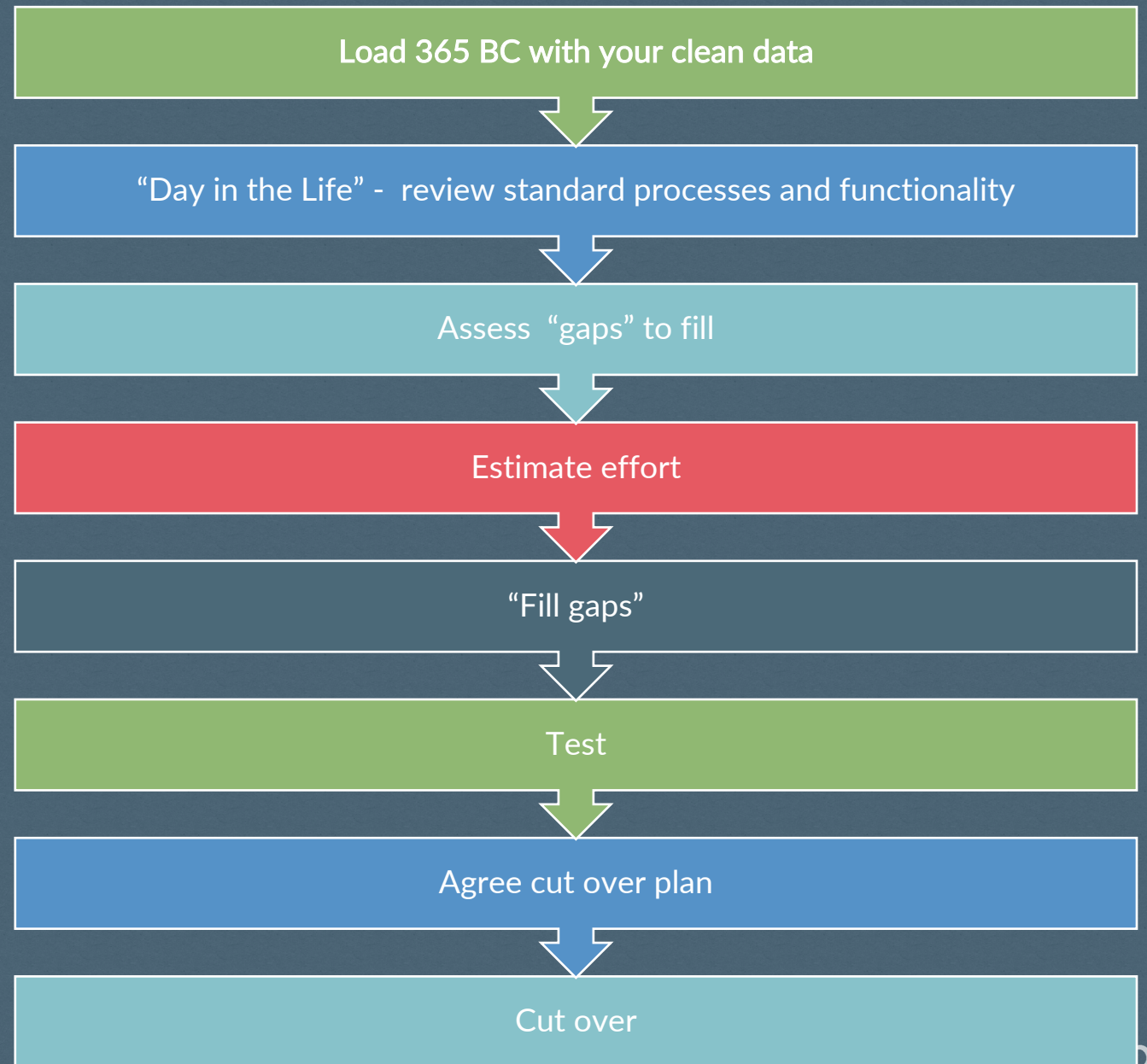
*We are*  
TheNAVPeople  
The365People

# UPGRADE OPTIONS

# OPTION 1: START FROM STANDARD

## *Benefits*

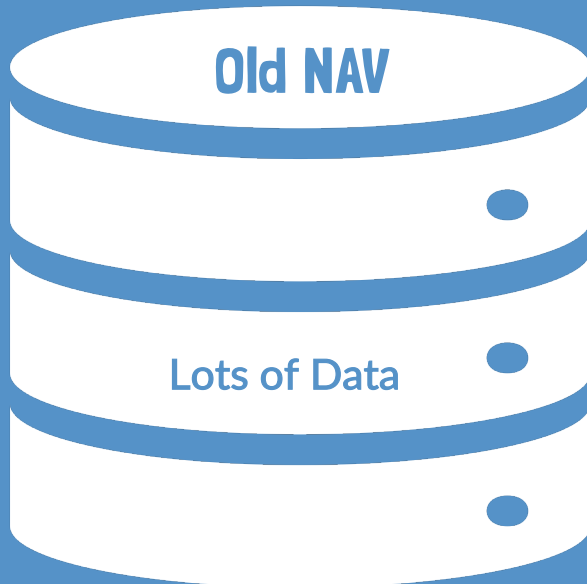
- All modifications as extensions
- Clean Data
- Restructured data if required
- Access to your old data
- Be standard where you can
- Improved Performance
- Clean Reporting





## Move Data

- Customers, Vendors, Items etc
- Ledger Entries - G/L Entries, Item Ledger etc



## Analyse your mods

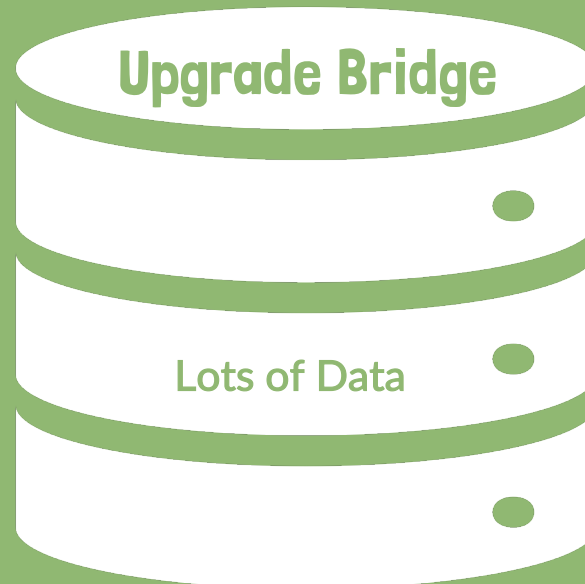
- Bring what's necessary
- Throw away dirty mods

## Summarise Ledgers

- G/L Entries by Date/Dimension
- Items by Location
- Warehouse by Bin

## Extract Open

- Customer Ledger
- Vendor Ledger
- Sales Orders
- Purchase Orders



## Old mods as Extension

- Table and Page Extensions
- Any new apps
  - i.e. Panels & Tiles, Continia, etc.

## Create/Post Opening

- General Ledger
- Customer Ledger
- Vendor Ledger
- Item Ledger



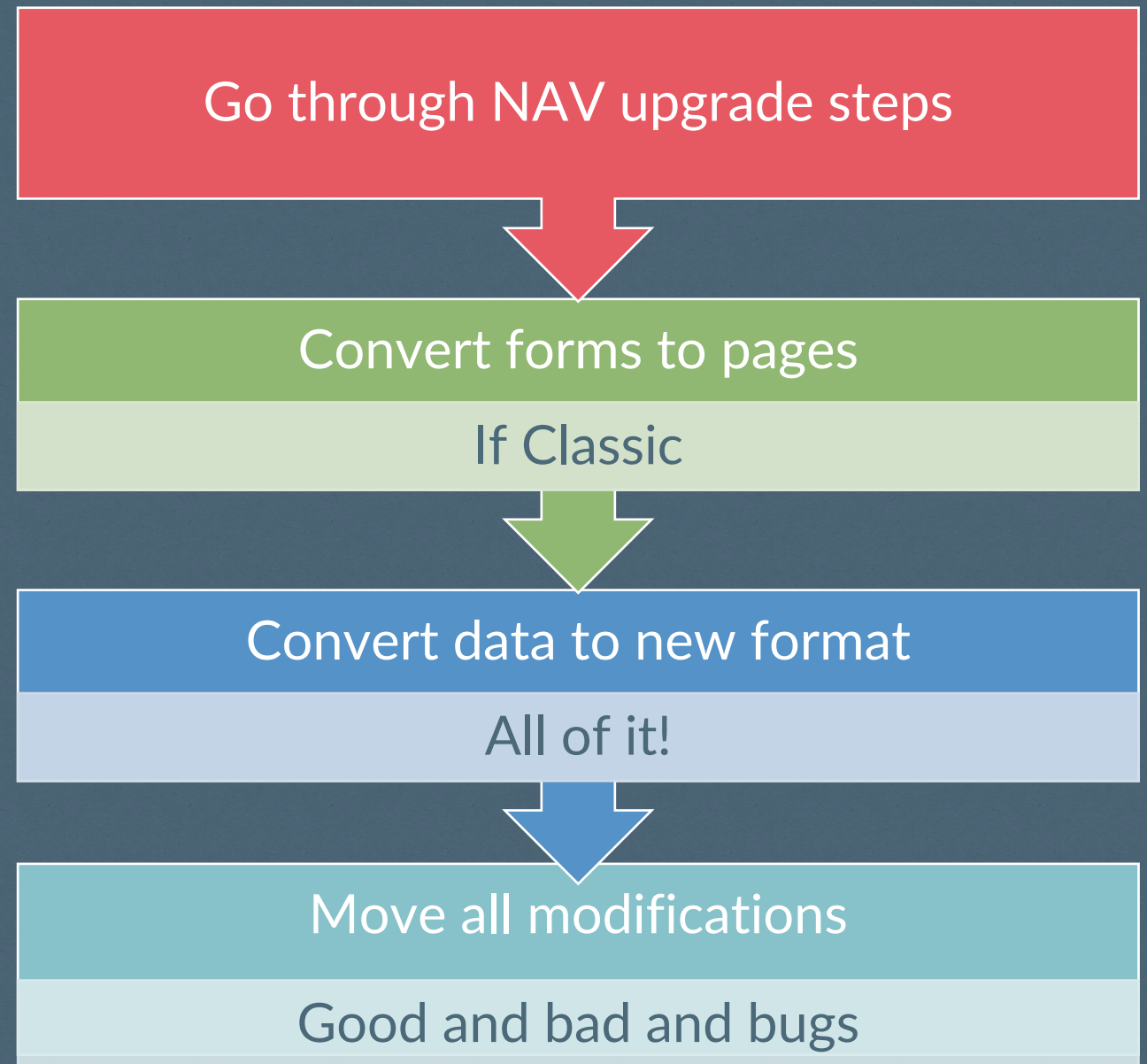
# OPTION 2: START FROM MODIFIED

## Benefits

- New Clients
- New SQL Performance (Tech)
- 365 “Look and feel” (New Clients)
- New Web Services
- Use AL for extension development
- Use Product Extensions (nHanced)

## But!

- Dirty Mods
- Dirty Data
- Non Standard Processes
- No Extensions





# OPTION 3: *(2013 Onwards)*

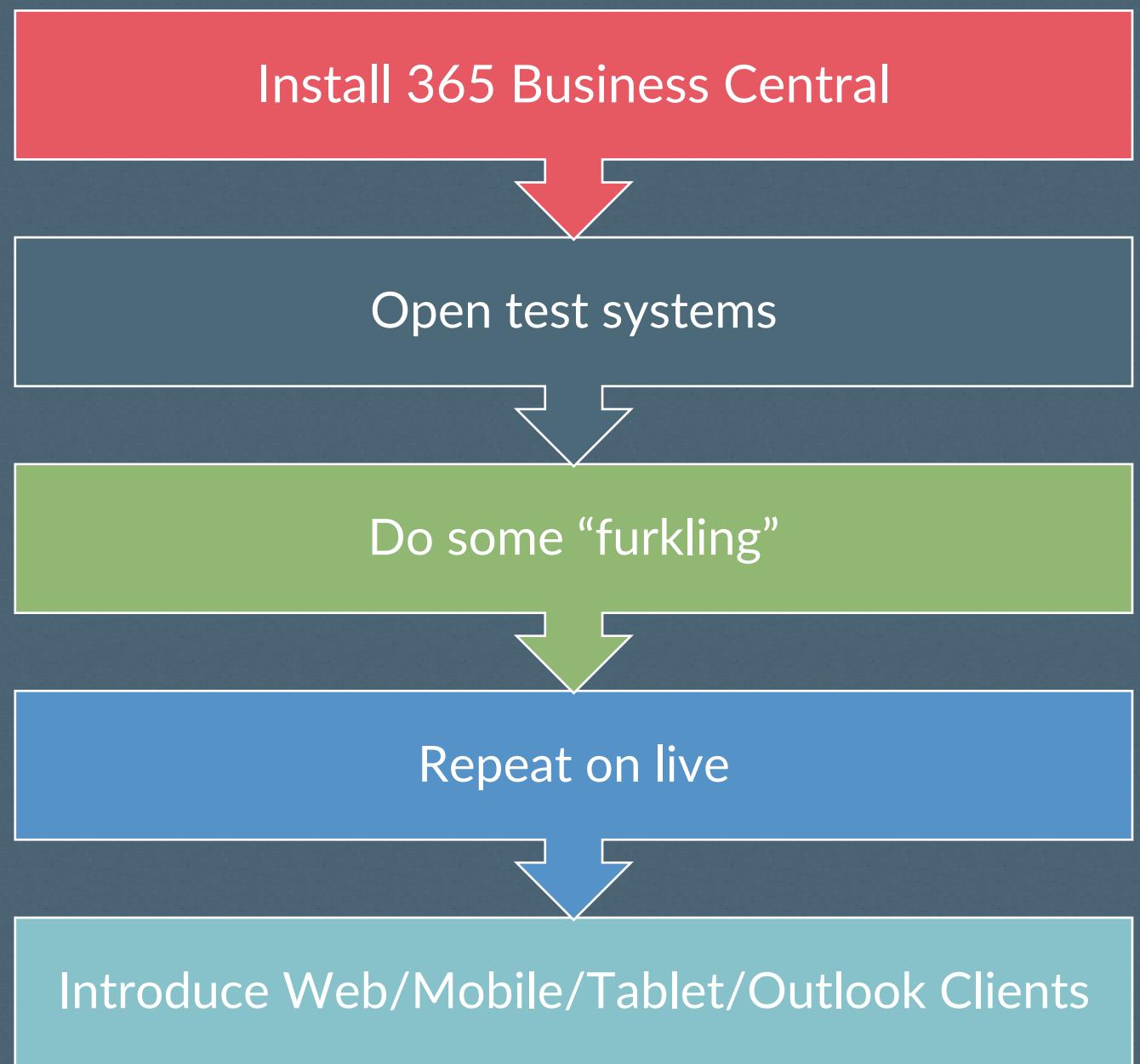
## TECH UPGRADE

### *Benefits*

- All data in new database
- All mods in new database
- No Process Review

### *But!*

- Dirty Mods
- Dirty Data
- Non Standard Processes
- No Extensions
- Affects Licencing (Named Users)



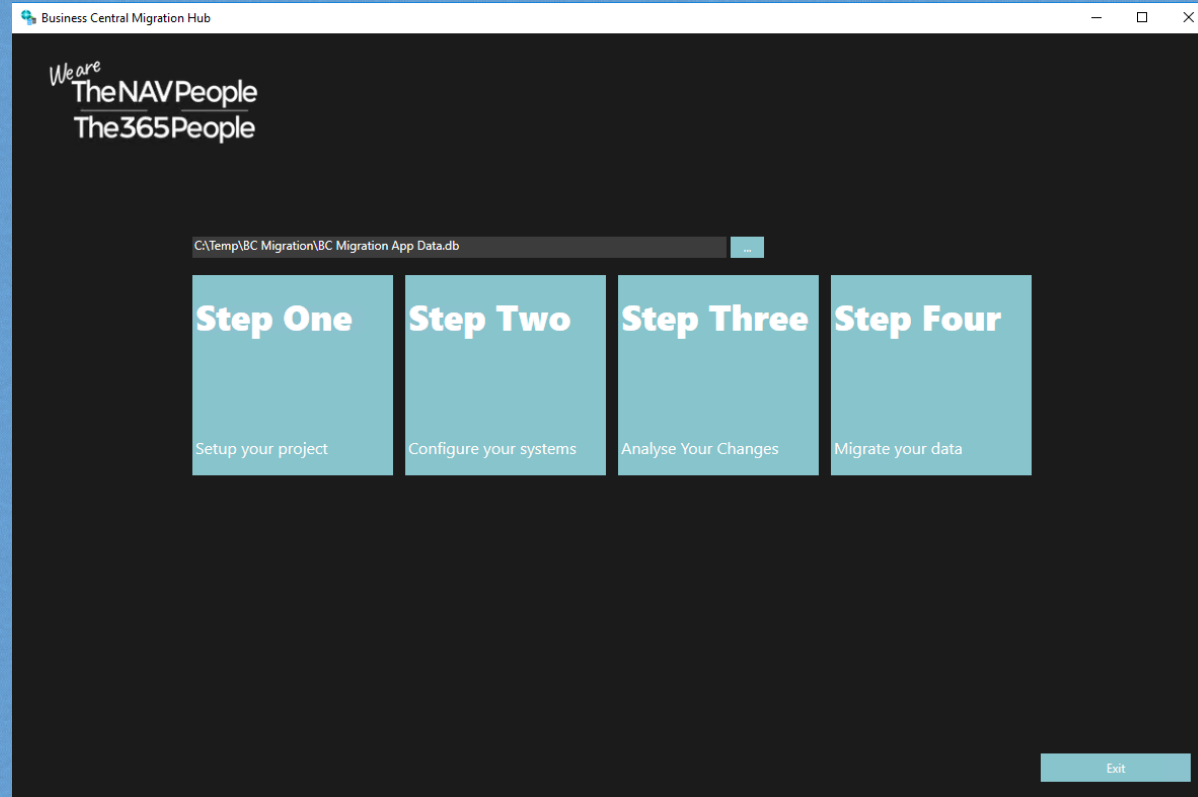
# DILEMMA



- Not sure which mods are in use?
- Can we review the mods before we carry them forward?
- Can we review the data before we push it into new clean Business Central?
- Do we get to play with Business Central with our data and run workshops?
- Can we get my data from other dormant systems to Business Central?
- Can The NAV | 365 People make this relatively easy for us?



# DEMO





**“WHY DOES IT  
COST SO MUCH  
TO UPGRADE?”**

Vendor Portal	Customer Portal
Business Intelligence	Mobile Expenses
Sana eCommerce	EDI
NAV CRM	Electronic Invoicing
Mobile NAV in WMS	Invoice Matching
Warehouse Mgmt	Online Questionnaires
Cost Accounting	Workflow
Cash Flow	Document Mgt
Fixed Asset	

*Brilliant New Systems Cost ££*

Finance	Finance
Stock	Stock
Order Processing	Order Processing
<b>OLD NAV</b>	<b>NEW NAV</b>

*Upgrade Cost £*



# QUESTIONS?



We are  
The NAV People  
The 365 People